

# INDEX

04



OPEN DESK SYSTEM

05



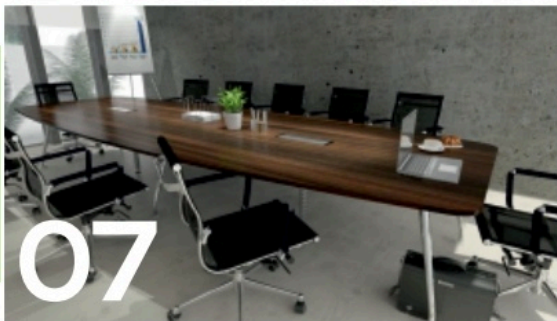
60MM PARTITION SERIES

06



EXECUTIVE TABLES

07



CONFERENCE TABLES

08



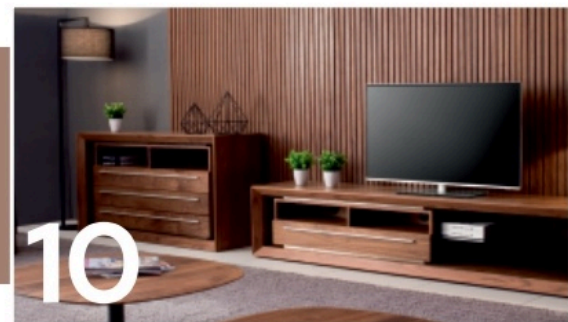
INSTITUTIONAL, TRAINING & COMPUTER LAB TABLES

09



STORAGES

10



RESIDENTIAL

11



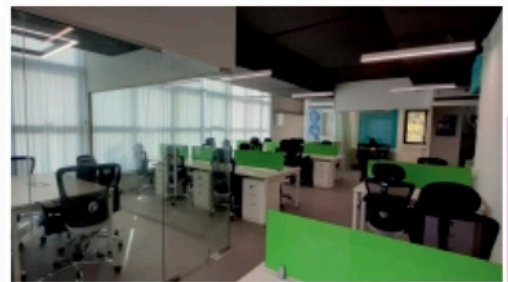
COMMERCIAL SPACES





## OPEN DESK SYSTEM

- This series helps you to occupy larger seating capacity in cramped spaces.
- Minimalistic and modern design styles it up for your work space.
- A cost effective option for all spaces.
- Various screen options helps you style a creative office.





## 60MM PARTITION SERIES

- This series is highly demanded and used in software/IT companies.
- This high rising Aluminium partition series offers benefits like - concealed wires, Raceway management, soft boards and

white marker boards as per the client requirements.

- There are various ways to suit your office styles.



**LINEAR**



**CURVILINEAR**

**120 DEGREE**







## EXECUTIVE TABLES

- Executive tables demand utmost comfort and style.
- Modern modular furniture enhances the look and feel of your work space.





## CONFERENCE TABLES

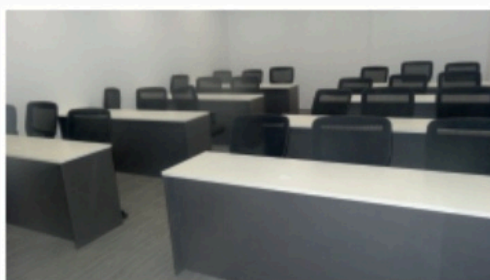
- This series is where you conduct important meetings for your team.
- With our fully customisable tables we provide the conference tables with POP-UP box that conceals switches, power and data cables with sleek designs.







## INSTITUTIONAL, TRAINING & COMPUTER LAB TABLES





## STORAGES



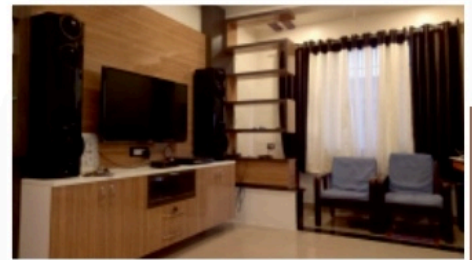




## RESIDENTIAL



**WARDROBES & LOFTS**

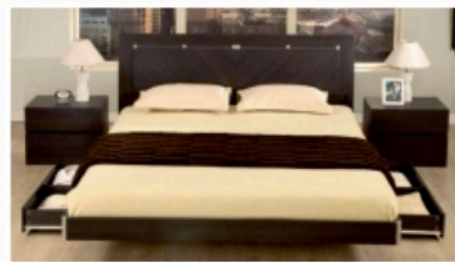


**TV UNITS**

**KITCHENS**

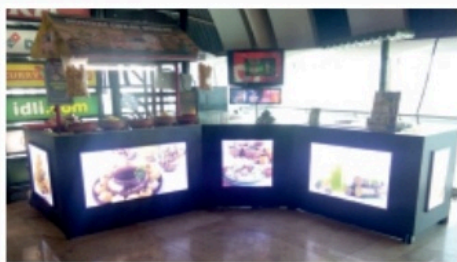


**BEDS**





## COMMERCIAL SPACES



### KIOSKS



### BAKERY INTERIORS

### HOSPITALS



### SALONS

